



The Mark Twain House & Museum

Two writers defining America;
Two National Historic Landmarks stimulating creativity;
ONE GREAT FIELD TRIP!

- Exceptional historic sites of national significance on a shared campus
- Inquiry-based, interactive, facilitated tours
- Programs meet Common Core State Standards and Connecticut Frameworks for specific content areas
- Integrated, interdisciplinary humanities approaches to inspire students

PRIORITY SCHOOLS!

Call or email for information on **FREE tours and programs.
Some subsidies available for transportation.**

Support for both Twain's and Stowe's School Programs is provided by:



Made possible with the support of:



**Ensworth Charitable Foundation,
Bank of America, N.A., Trustee**

Harriet Beecher Stowe Center School Programs receive additional support from:

The Hartford and other
Stowe Prize Big Tent Jubilee supporters
Elizabeth Carse Foundation
McPhee Foundation
NewAlliance Foundation
Charles Nelson Robinson Fund

The Mark Twain House & Museum School Programs receive additional support from:

The Barnes Foundation
Berkshire Bank
J. Walton Bissell Foundation
The Brown Rudnick Charitable Foundation
Stanley D. and Hinda N. Fisher Fund
at the Hartford Foundation for Public Giving
The Fund for Greater Hartford
The Ellen Jeanne Goldfarb Memorial Charitable Trust

Harriet Beecher Stowe Center Education Programs

Enhance your tour of the Stowe Center and promote the development of critical thinking, reading, writing, speaking, and listening skills. Students explore history, literature, and civics through multiple perspectives, including larger national themes.

Inspiration to Action (Grades K – 5)

Stowe promoted the common good: equality, justice, and freedom. Students will explore ways they can make a positive change in their community.

Her Words Changed the World (Grades 6 – 12)

Using Stowe as an example, students will compare and contrast how people in history made a difference to how people today can do the same.

Liberty and Justice for All (Grades 8 – 12)

Students explore multiple perspectives and viewpoints toward slavery and the publication of *Uncle Tom's Cabin* in the 1850s.

Salons by Stowe (Grades 9 – 12)

A dynamic 21st century conversation-based program focused on race, class, and gender in contemporary life. Topics can include: building community, American culture, stereotypes, bullying, human trafficking, activism or one of your choice.

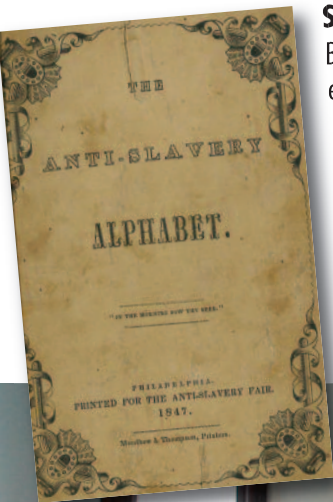
STUDENT STOWE PRIZE (GRADES 9-12)

Biennial award for one high school and one college student for writing to effect social change. Information: HarrietBeecherStowe.org

BOOKING AND MORE INFORMATION

Book a Stowe Center tour & program: **(860) 522-9258 ext. 308**
or **SchoolPrograms@StoweCenter.org**

Visit **HarrietBeecherStowe.org** for more information and connections to the Common Core Standards and Connecticut Frameworks for specific content areas.





Mark Twain House & Museum Education Programs

Tours of the Mark Twain House immerse students in a unique historical experience, exploring the ideas, technology, social life, and culture of Gilded Age Connecticut. Extend their learning with primary source-based education programs.

HIGH SCHOOL PRIMARY SOURCE PROGRAMS (GRADES 9-12)

Critical Thinking I: Mark Twain & Race

Critical Thinking II: Mark Twain & American Imperialism

Students research and develop critical essay-writing skills through rich and challenging discussions of primary source material. (English Language Arts and Social Studies, Geography designed for advanced and AP classes)

Life on the Mississippi (Grades 6-12)

Students collaboratively explore interdisciplinary primary sources to understand the imaginative power of the Mississippi. (English Language Arts, Social Studies, Geography and Music)

Huckleberry Finn: An American Story (Grades 6-12)

Exploring the enduring relevance of Twain's masterpiece, during his life and in American history. With an unflinching look at slavery and Jim Crow, students discuss Mark Twain's seminal literature in a deep historical context. (English Language Arts and Social Studies)

Sam's Biographies (Grades 6-12)

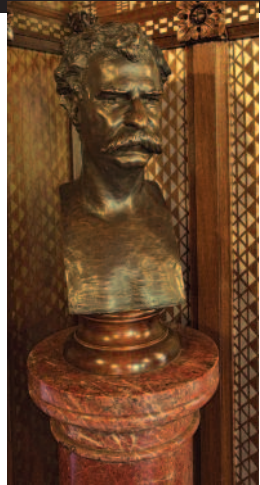
Students use wide ranging primary sources to write a biography, taking into account points of view across racial, gender, and class lines. (English Language Arts and Social Studies)

Mark Twain: America's Master Storyteller (Grades 3-5)

Students play the same vocabulary-building story game as Mark Twain's children. Perfect for language development and inspiring creativity.

BOOKING AND MORE INFORMATION

Book a field trip at the Mark Twain House & Museum: **(860) 247-0998** or **GroupTour@MarkTwainHouse.org**. Visit **MarkTwainHouse.org** for information on curricular relevance, connections to the Common Core State Standards and Connecticut Frameworks for specific content areas.



Stowe and Twain Guided Tours and Programs



Stowe Center Guided Tour (Grades K-12)

During a 45-minute facilitated tour, students explore the life and impact of 19th-century author Harriet Beecher Stowe and her most famous novel, *Uncle Tom's Cabin*. By participating in discussions, examining primary source documents and making connections to current events, students can challenge assumptions that lead to inequality and create positive change, as Stowe did. Customized for grade level.

The Mark Twain House Guided Tour (Grades 3-12)

Experience a 45-minute facilitated, inquiry-based tour of the house where Samuel Clemens (AKA Mark Twain) lived and worked from 1874 to 1891, writing his most successful books. Explore three floors of his elegant mansion, named one of National Geographic's "Ten Best Historic Homes in the World." Learn about life in 19th-century Connecticut through one of its most famous families.

Tour Both National Historic Landmarks and add a Stowe and Twain combined program to deepen your students' experience!

Stowe & Twain: Effecting Social Change (Grades 7-12)

Following the tours, students experience a discussion-based program focusing on *Uncle Tom's Cabin* and *Adventures of Huckleberry Finn*. The essential question: "Is the United States a 'just' society, and how has the concept of justice evolved over time from slavery through the Civil Rights movement to the present?"

Nook Farm Neighbors (Grades 3-6)

Students learn how historic events connect to life today. At the Twain House, they explore the activities of the 19th-century Clemens household. At the Stowe Center, they discover how family, education, and community influenced Stowe to speak up to change society and how they too can effect change in their communities.

***Call or email for information about Outreach to Classrooms
and/or Professional Development for Teachers:***



77 Forest Street, Hartford, CT 06105
860.522.9258 x308

The Mark Twain
House & Museum

351 Farmington Avenue, Hartford, CT 06105
860.247.0998